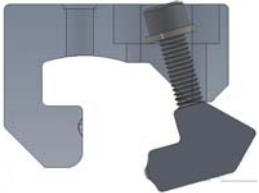


AceClamp[®] SL

PAT No. 7,386,922-B1

Designed for the contractor.
Faster to install than
the competition.
Installs from the top not the side.

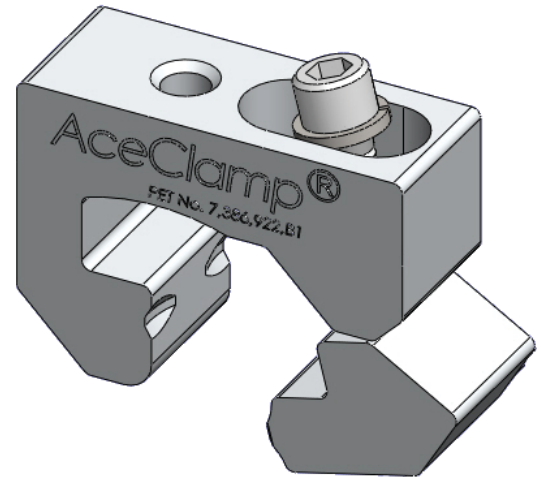
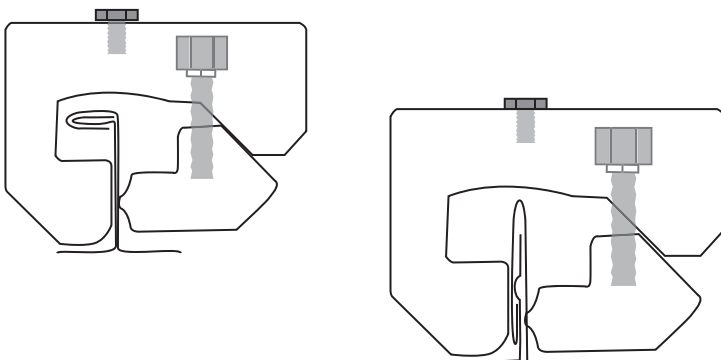


Installs in half the time compared
to clamps with set screws

Non-penetration attachment for:

- Roofing Displays
- Solar Panels
- Satellite Dishes
- Conduits & Piping
- Snow Retention Systems
- Many other uses.

Multiple Shapes



Aluminum 6061-T6

All Stainless Steel Hardware.

Compatible with all Steel and
Aluminum Roof Panels.

High Wind Load Resistance.

Contact us for load ratings on
your roof panels.

